



Pon Power BV
Ketelweg 21
3356 LE Papendrecht
Nederland

Gen: +31(0)786420420
Fax: +31(0)786157122

100 – Teso Dokter Wagemaker Inspection Report.

Carried out by:	E. de Deugd – G. Pors
Motortype	D3608
Serie #	6MC00691 – 6MC00692 – 6MC00693 – 6MC00694
Hours	M1 8969 – M2 8749 – M3 9968
Subject of the test	Soot emissions
To:	M.P. Bakker – M.F.J. Witte – E. Le Rouex
C.C. :	T. Kok – T. Kolster – M. Brandsma – H. Gouwens.
Date:	08-02-2008
Location:	Northsea

intro:

By customer requested soot emissions measurement with the use of Xmile

Conclusion:

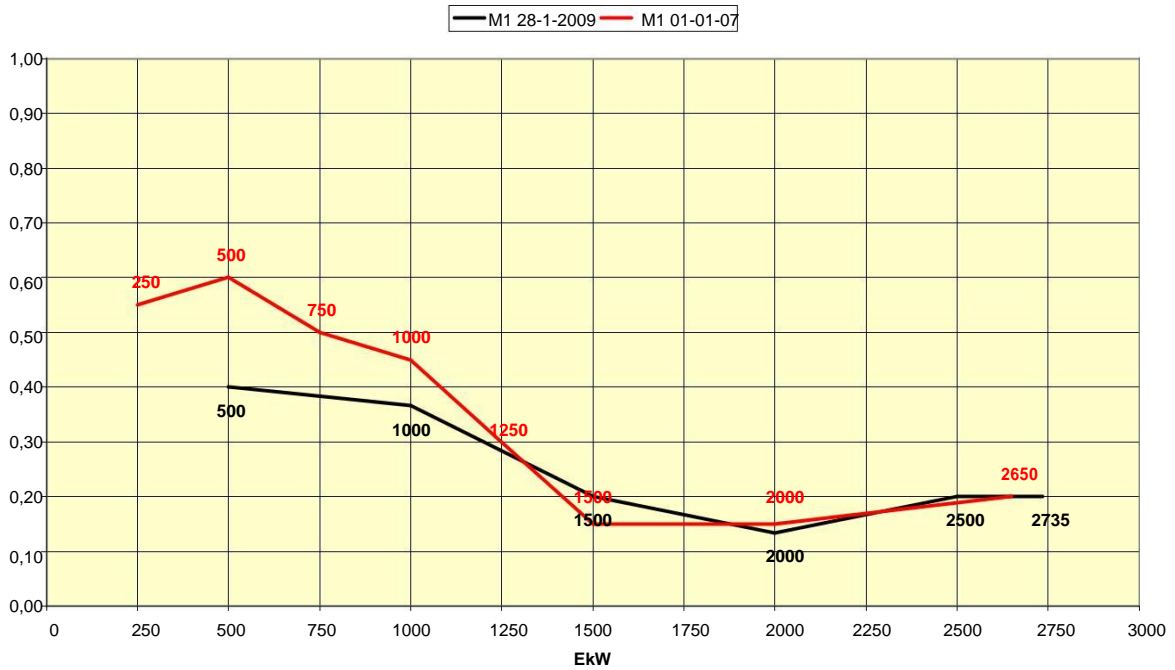
The average soot emissions of engine 1 is reduced from 0,36 naar 0,25
The average soot emissions of engine 2 is reduced from 0,39 naar 0,29
The average soot emissions of engine 3 is reduced from 0,54 naar 0,51

Measurements :

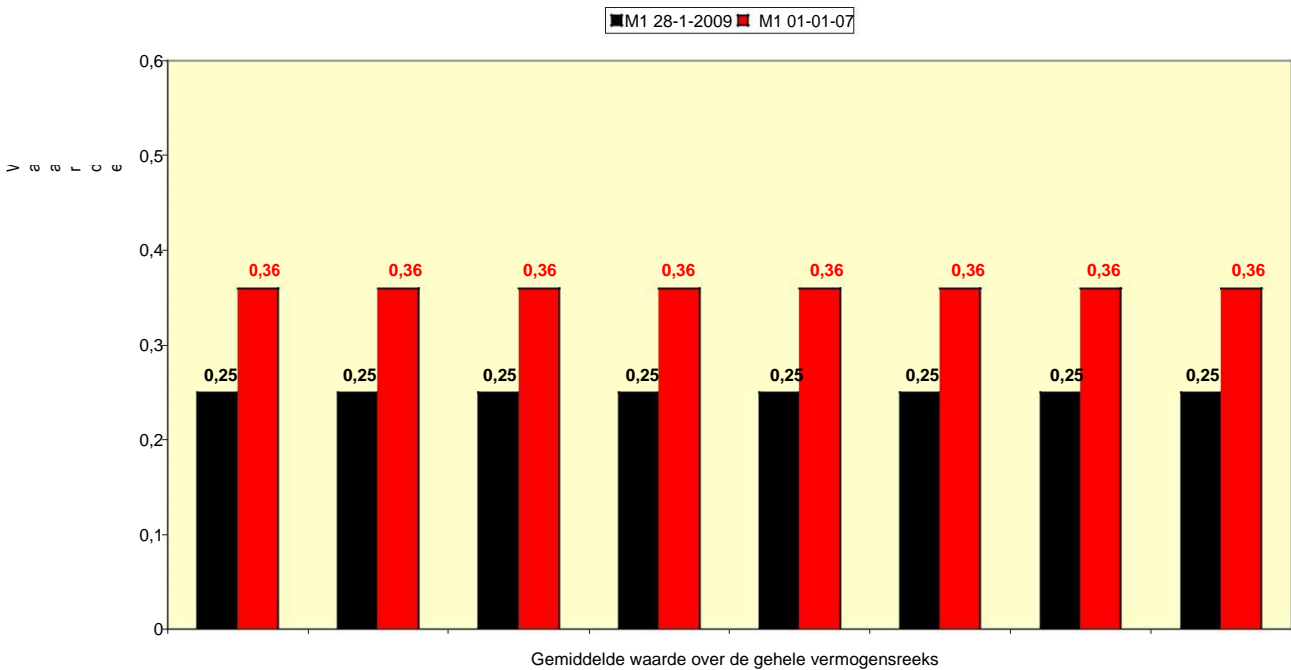
On the sea between Rotterdam and Texel, the regular route of the ship is daily tours between Rotterdam and Texel, the exhaust was measured just after the turbo.

100 – Teso Dokter Wagemaker Inspectie Rapport.

Teso Dokter Wagemaker M1 Roetuitstootmeting 28-01-2009

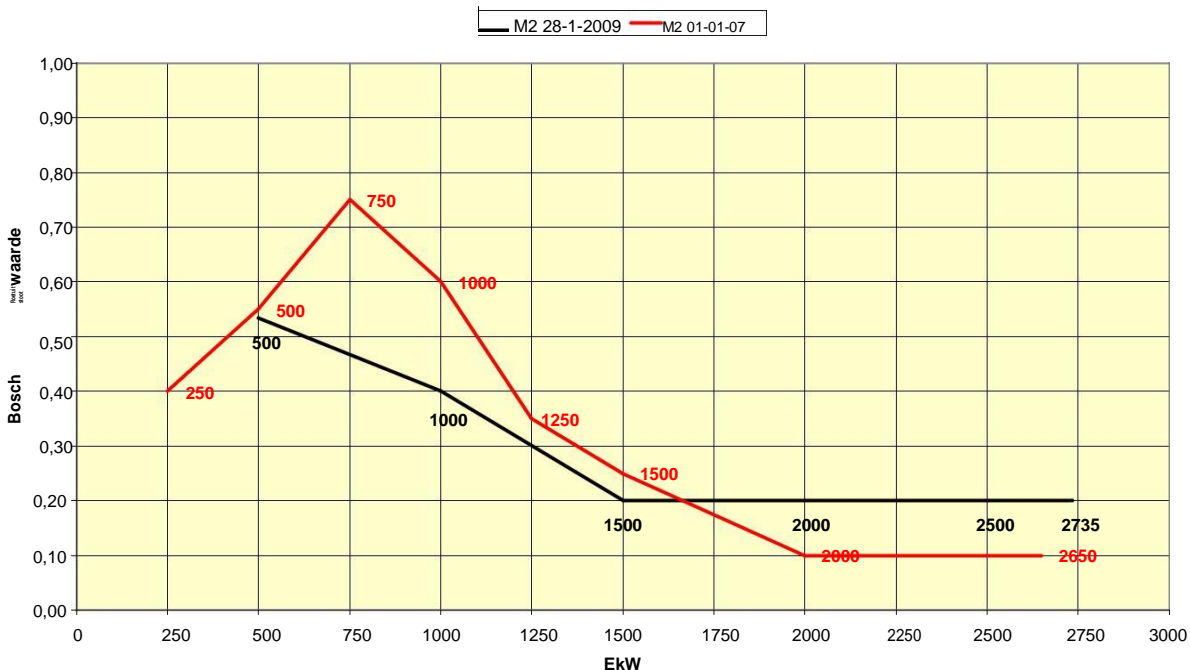


Teso Dokter Wagemaker M1 Gemiddelde Roetuitstoot van 01-01-2007 en 28-01-2009

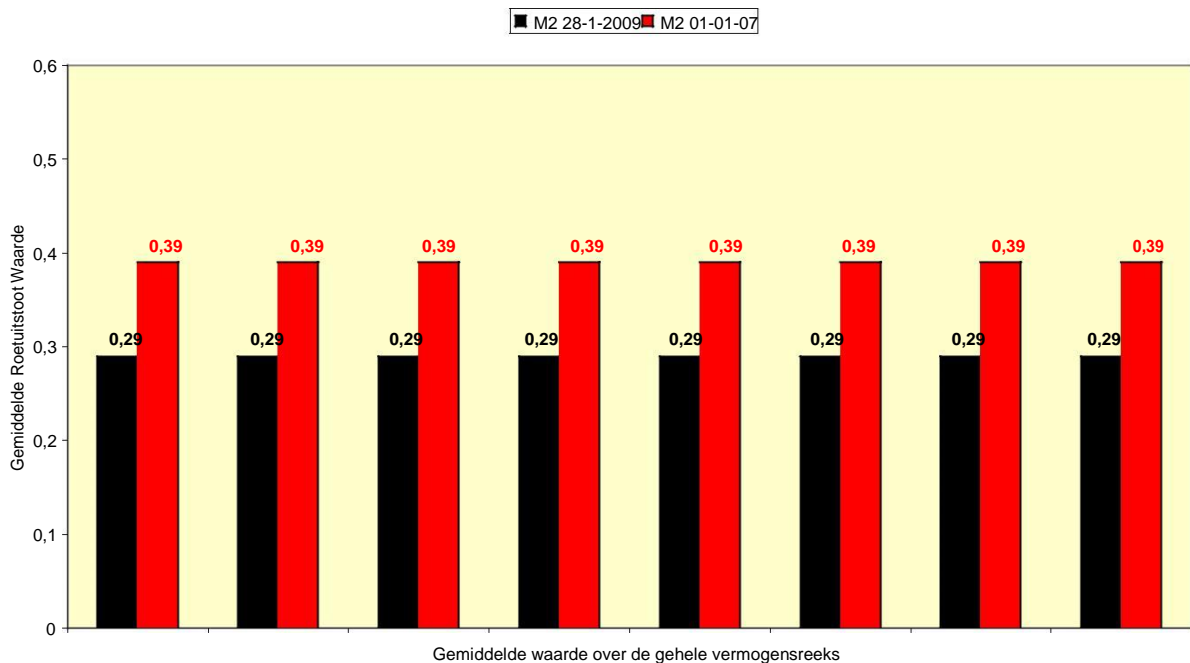


100 – Teso Dokter Wagemaker Inspectie Rapport.

Teso Dokter Wagemaker M2 Roetuitstootmeting 28-01-2009

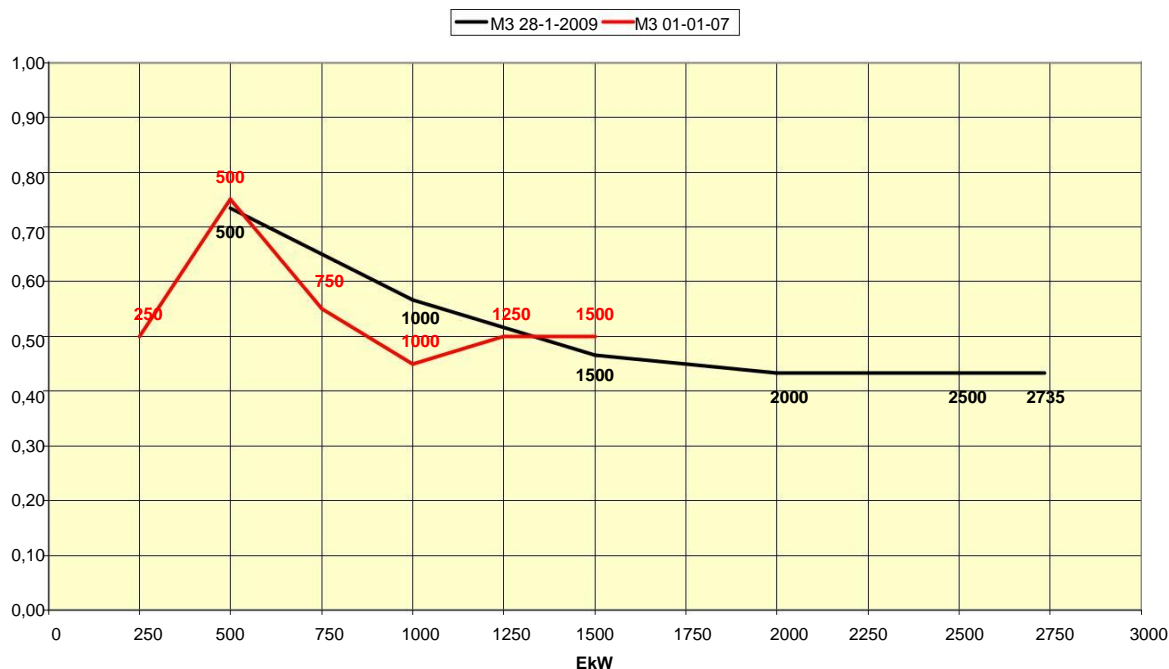


Teso Dokter Wagemaker M2 Gemiddelde Roetuitstoot van 01-01-2007 en 28-01-2009



100 – Teso Dokter Wagemaker Inspectie Rapport.

Teso Dokter Wagemaker M3 Roetuitstootmeting 28-01-2009



Teso Dokter Wagemaker M3 Gemiddelde Roetuitstoot van 01-01-2007 en 28-01-2009

